

***Natural family planning.***

**Lady-Comp baby – the intelligent fertility computer.**



**LADY-COMP® baby**

# Lady-Comp baby – For all women trying to conceive.

Babies can be planned. Lady-Comp baby helps make families.

## The program.

Lady-Comp baby determines your fertile days based on your morning temperature and will alert you on your most fertile days: on the day you ovulate – and the five days before ovulation. It can also do much more: it uses statistical methods to detect various causes of reduced fertility and thus helps to solve individual problems of conception.



## It's so easy!

- 1 Take your temperature under your tongue every morning.**
- 2 Enter menstruation on the days you have them.**
- 3 Lady-Comp baby evaluates your data and calculates your fertility status for the next 24 hours:**

- = Infertile**
- = Learning phase**
- = Fertile**
- ☀ = Ovulation**

## Reliability is most important.

Lady-Comp baby's daily fertility display has a Pearl-Index of 0.7, meaning it is 99.3% accurate. The fertility computer is the uncontested leader in terms of accuracy, ease of use and safety.

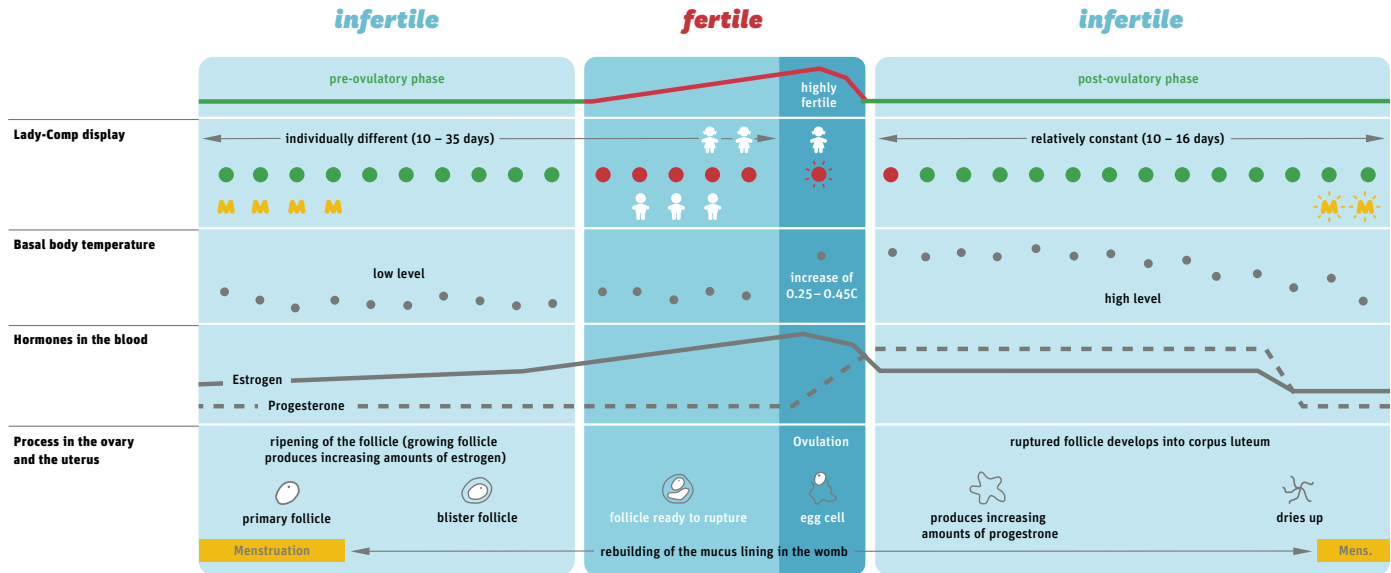
## Lady-Comp baby does so much more:

- Forecasts your most fertile days.
- Contains an integrated pregnancy test.
- Calculates the expected delivery date of your baby.

With the fertility calendar and planning statistics you obtain valuable information to help you plan your child.

- Past and future fertility status.
- Cycle length and length of luteal phase.
- Temperature curve and temperature rise after ovulation.
- Ovulation fluctuation in days.
- Ovulation prognosis and gender prediction.
- Shows hormonal imbalances.
- Baby planning statistics.
- View your cycle details on your Lady-Comp baby or PC.

# Medical basics.



## Biological facts:

- Every woman ovulates only once each cycle.
- If on the rare occasion two or more ovulations occur, they will occur within 24 hours.
- After ovulation, the egg can be fertilized for a maximum of 18 hours.
- Sperm can remain active and fertile in the woman's body for a maximum of 5 days.

## That means:

**Just on six days during each cycle pregnancy can occur, five days before ovulation and on the day of ovulation.**

## Lady-Comp basic knows:

Lady-Comp baby uses these biological facts and your individual cycle to reliably indicate when you are fertile or not.

# **More information.**

For current prices and detailed information, please visit: [www.lady-comp.de](http://www.lady-comp.de)



**DEVELOPMENT, MANUFACTURING,  
WORLDWIDE DISTRIBUTION**

 VE Valley Electronics GmbH

Breite 2

82418 Murnau/Germany

Tel.: +49 (0) 8841 48928-0

Fax: +49 (0) 8841 48928-24

[info@lady-comp.de](mailto:info@lady-comp.de)

[www.lady-comp.de](http://www.lady-comp.de)